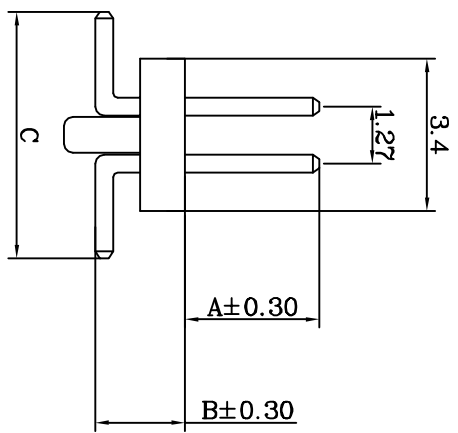
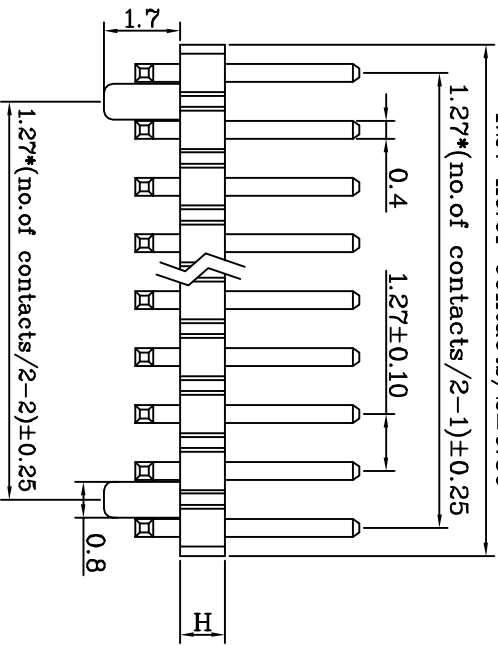
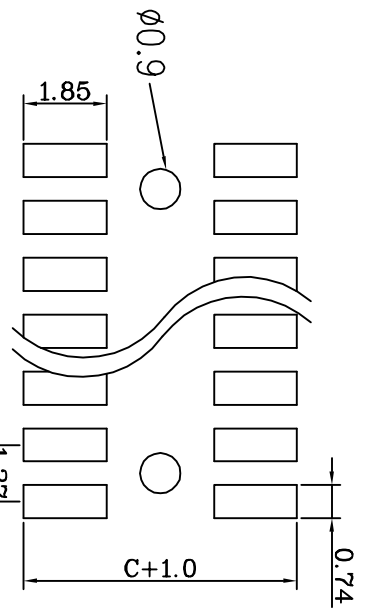
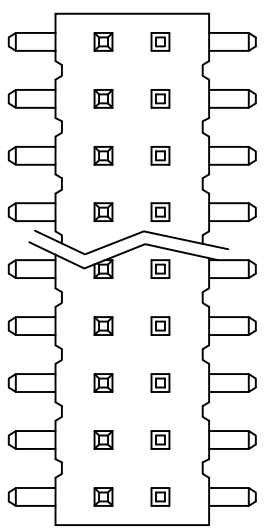


CUSTOMER COPY



Pin Chart				Pin Chart					
No.	A	B	C	H	No.	A	B	C	H
00	2.00	1.70	5.10	1.00	06	1.90	1.60	5.10	1.00
01	2.00	2.20	5.10	1.50	07	3.00	1.50	5.20	1.00
02	3.00	2.00	5.10	1.00	08	1.90	2.40	5.10	1.50
03	2.45	2.40	5.10	1.50	09	3.00	3.40	5.10	2.60
04	5.00	2.20	5.10	1.00	10	3.00	3.40	5.10	2.60
05	2.50	2.40	5.10	1.50	11	3.00	1.70	5.10	1.00

ORDER INFORMATION  
 171 40 XX XX X  
 3:Plating Gold Flash  
 No. of Contact (04 ~ 100)  
 Pin chart  
 Type

SPECIFICATION MATERIAL

- \* Current Rating: 1 A
- \* Withstanding Voltage: 600 VAC ( 1 min. )
- \* Insulation Resistance: 1000 Megohms MIN.
- \* Contact Resistance: 30 Milliohms MAX.
- \* Operating Temperature: -55°C to +105°C
- \* Retention Force: 450g MIN.
- \* Contact: Copper Alloy
- \* Insulator: Nylon 6T
- \* Terminal: Phosphor Bronze/Bross
- \* Plating: Selective Gold

**钰满荣企业股份有限公司** ACMELEX CO., LTD.  
 TEL: 886-2-85124595 FAX: 886-2-85124322

TITLE: Pitch 127mm Dual Rows SMD Type Pin Header Connector  
 SCALE: 1:1  
 UNIT: mm

PART NO: 107700  
 APP BY: *Shung*  
 CHK BY: *Shengyi*  
 DR BY: *Amos*

MATL: RoHS  
 DWG. NO. C17140XXXXXX  
 RoHS

REV.	DESCRIPTION	APP.	DATE
A	NEW DESIGN	Amos	2013-03-26