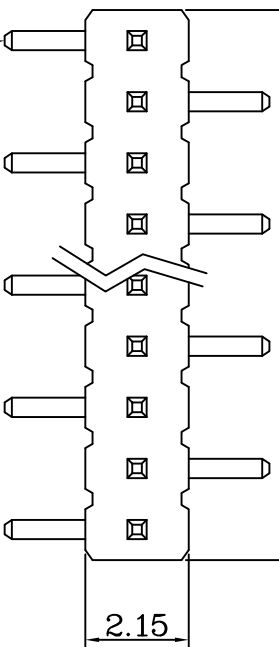


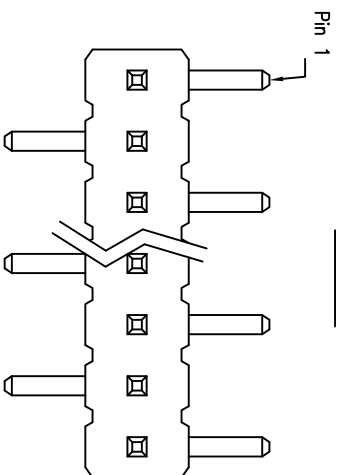
CUSTOMER COPY

A TYPE

1.27*NO OF CONTACTS

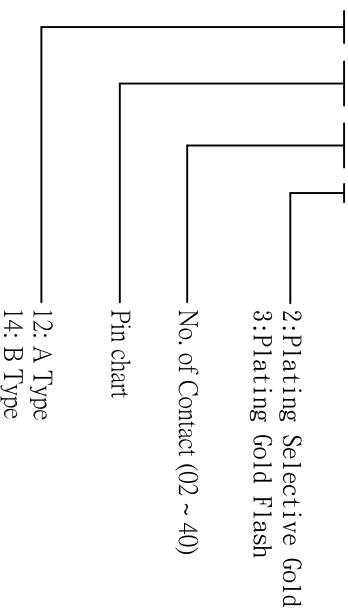


B TYPE



ORDER INFORMATION

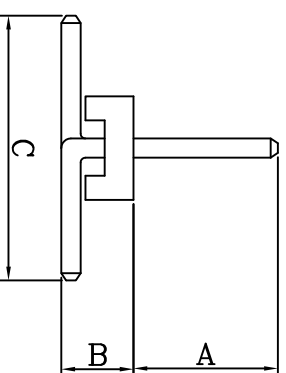
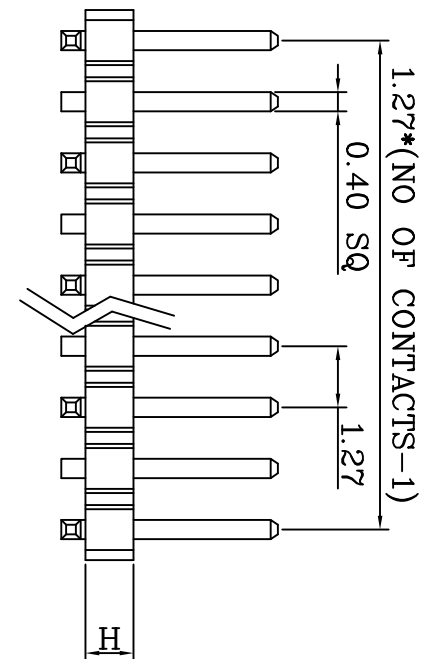
171 1X XX XX X



SPECIFICATION

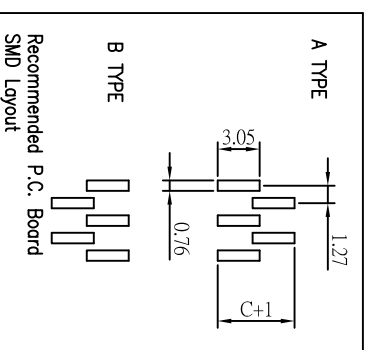
- * Current Rating: 1 A
- * Withstanding Voltage: 600 VAC (1 min.)
- * Insulation Resistance: 5000 Megohms MIN.
- * Contact Resistance: 30 Milliohms MAX.
- * Operating Temperature: -55°C to +105°C
- * Retention Force: 450g MIN.
- * Contact: Copper Alloy
- * Insulator: High Temperature Plastic.
- * Plating: Selective Gold or All Gold

MATERIAL



Pin Chart

No.	A	B	C	H
00	2.80	1.50	5.00	1.00
01	3.00	2.30	3.50	1.70
02	2.00	2.20	3.40	1.50
03	2.00	4.00	5.00	1.00
04	2.00	4.00	3.50	1.70

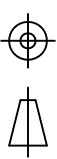


钰满荣企业股份有限公司 ACMELEX CO., LTD.

TEL:886-2-85124595

FAX:886-2-85124322

0.0±0.30	SCALE: 1:1	TITLE: Pitch 1.27mm (05") Center	PART NO: 107200
0.00±0.20	UNIT: mm	Single Row 0.4mm Square Post Pin Header Connector	APP BY: Hung
0.000±0.1			CHK BY: Cheryl



MATL: RoHS (Nylon 6T)
DWG. NO. C1711XXXXXX

DR BY: Amos

