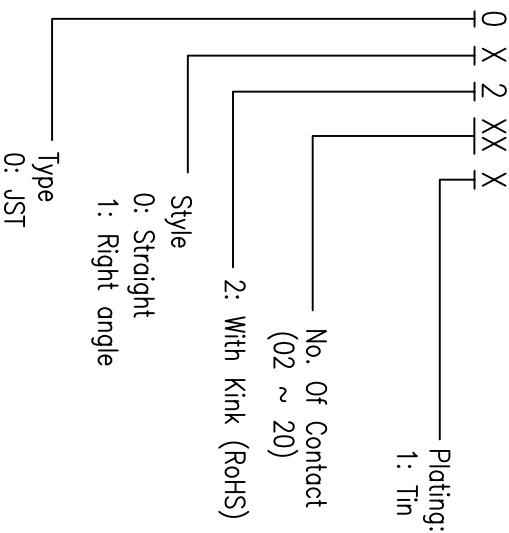


CUSTOMER COPY

REV	ECN NO.	APP.	DATE
A	NEW DESIGN		

ORDER INFORMATION

1221 0 X 2 XX X

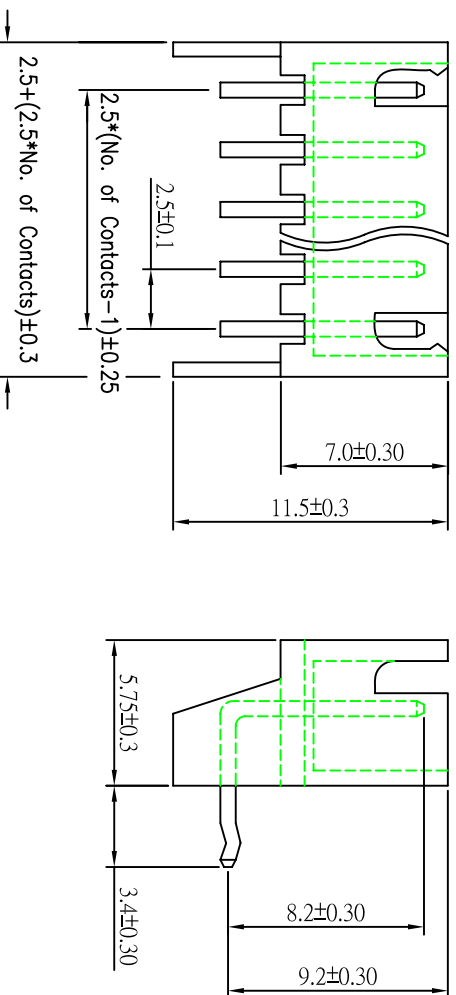
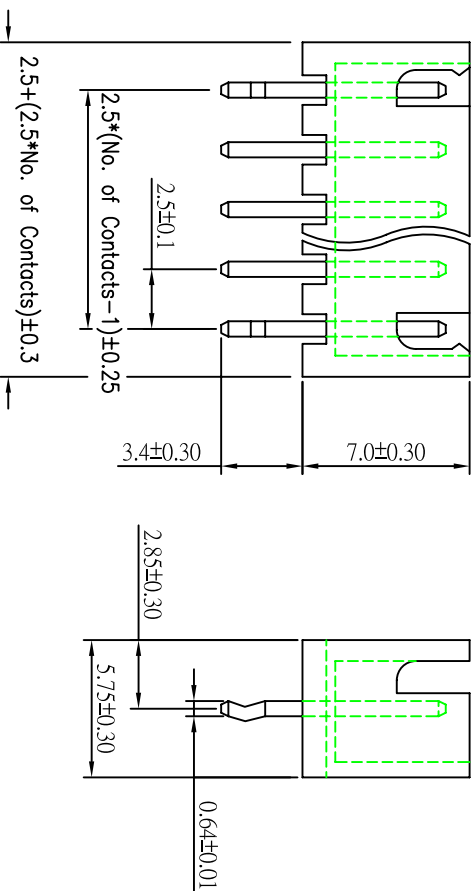
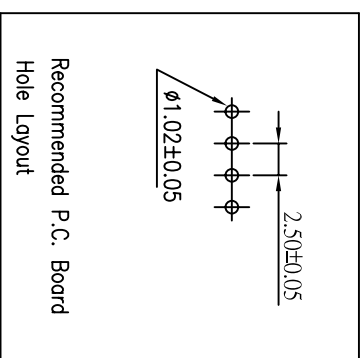


SPECIFICATION

- * Current Rating: 2 A
- * Withstanding Voltage: 600 VAC (1 min.)
- * Insulation Resistance: 1000 Megohms MIN.
- * Contact Resistance: 20 Milliohms MAX.
- * Operating Temperature: -40°C to +85°C
- * Retention Force: 700g MIN.

MATERIAL

- * Contact: Brass
- * Insulator: NYLON 66
- * Plating: Tin



		ACMELUX CO., LTD. TEL: 886-2-85124595 FAX: 886-2-85124322	
0.0±	SCALE:	TITLE:	
0.00±	UNIT: mm	2.50MM (.098") WAFER JST	
0.000±	TYPE	MATL: ROHS	APP BY: Hung
		DWG. NO. C12210X2XXX	CHK BY: Cheryl
			DR BY: Amos
		PART NO:	