

CUSTOMER COPY

REV.	DESCRIPTION	APP.	DATE
A	NEW DESIGN	Amos	2012-09-20

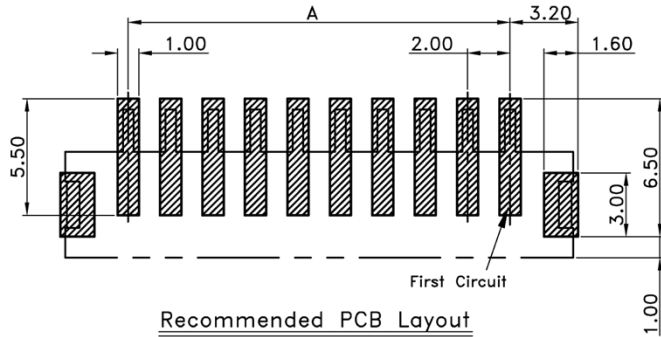
■ SPECIFICATIONS

- Current Rating : 2A AC/DC
- Withstanding Voltage : 800V AC/minute
- Insulation Resistance : 1,000MΩ min
- Temperature Range : - 25°C to + 85°C
- Contact Resistance : 20mΩ max
- Poles : 02~16
- Material :
 1. Contact : Phos. Bronze
 2. Nail : Phos. Bronze
 3. Base : Nylon 9T UL94V-0, Color : Nature
 4. Cap : Nylon PA46 UL94V-0
- Plated : Refer the above options
 - ※120μ" Sn All Plated ; 30 μ" Ni under All Over
- Q' ty :
 1. 1,000 pcs./Tube (With Cap)
 2. 800 pcs./Reel (With Cap)

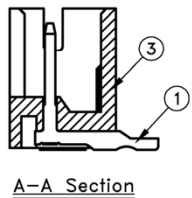
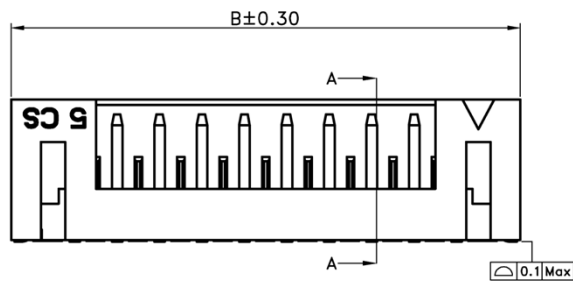
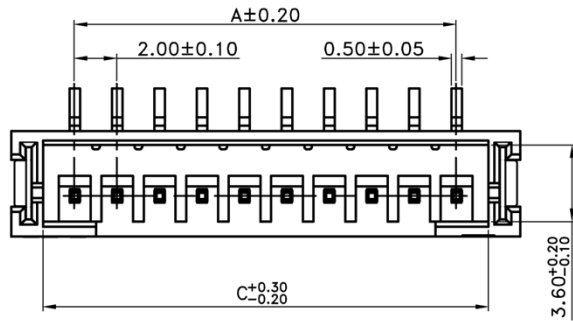
ORDER INFORMATION

1212 4 7 1 XX X

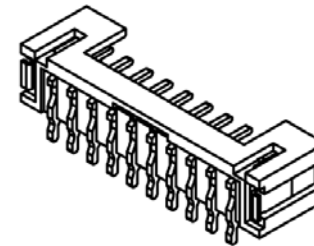
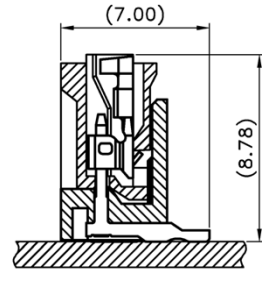
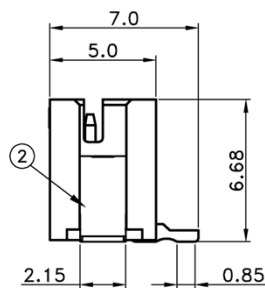
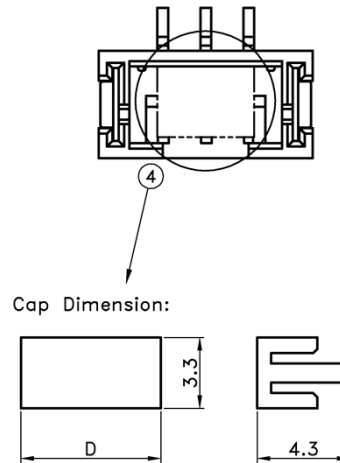
- 1:Plating Tin
- No. of Contact
- 1:w/o Kink/White
- 180° SMT + Cap Reel Packing
- JST Type



Recommended PCB Layout



A-A Section



Poles	Dimensions(mm)		
	A	B	C
2	2.00	8.00	5.00
3	4.00	10.00	7.00
4	6.00	12.00	9.00
5	8.00	14.00	11.00
6	10.00	16.00	13.00
7	12.00	18.00	15.00
8	14.00	20.00	17.00
9	16.00	22.00	19.00
10	18.00	24.00	21.00
11	20.00	26.00	23.00
12	22.00	28.00	25.00
13	24.00	30.00	27.00
14	26.00	32.00	29.00
15	28.00	34.00	31.00
16	30.00	36.00	33.00

Poles	D
02~03	4.50
04~16	6.50



鈺滿榮企業股份有限公司 ACMELUX CO., LTD.

TEL:886-2-85124595

FAX:886-2-85124322

0.0±0.30	SCALE: 1:1	TITLE:	PART NO:
0.00±0.20	UNIT: mm	Pitch 2.0mm 180° SMT Type Wafer Connector	APP BY: <i>Hung</i>
0.000±0.1			CHK BY: <i>Cheryl</i>
		MATL: RoHS	DR BY: <i>Amos</i>
		DWG. NO. C1212471XXX	A244