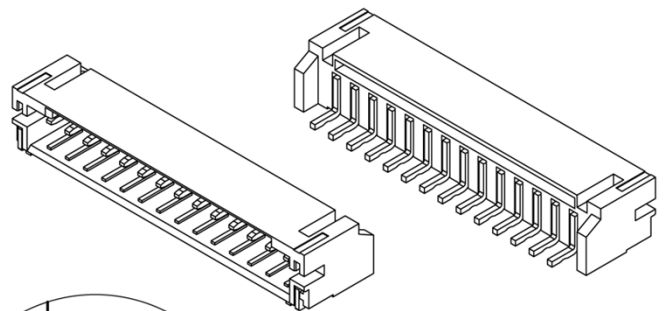
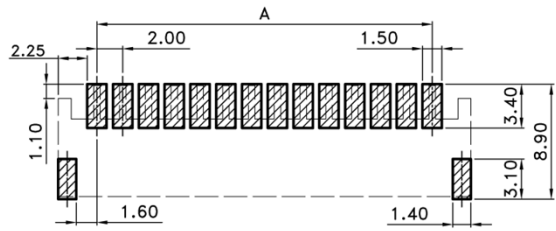
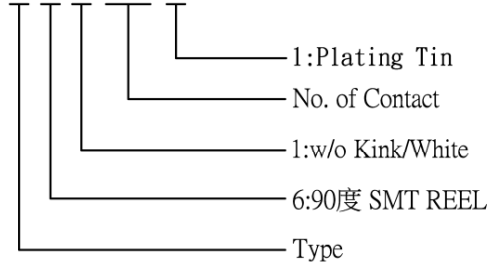


CUSTOMER COPY

REV.	DESCRIPTION	APP.	DATE
A	NEW DESIGN	Amos	2012-07-03

ORDER INFORMATION

1212 4 6 1 XX X



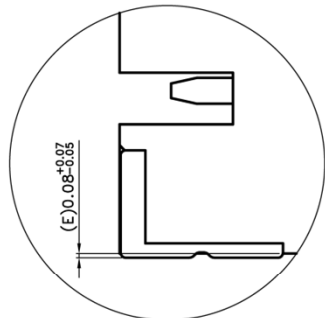
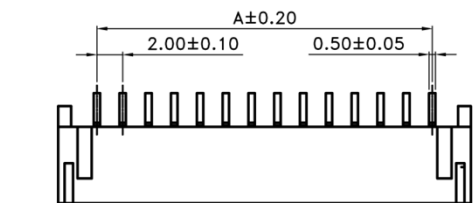
RECOMMENDED PCB LAYOUT DIM.

SPECIFICATIONS

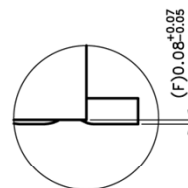
- Voltage Rating : 100V AC/DC
- Current Rating : 2A AC/DC
- Withstanding Voltage : 800V AC/minute
- Insulation Resistance : 1,000M Ω min
- Temperature Range : - 25°C to + 85°C
- Contact Resistance : 20m Ω max

Material :

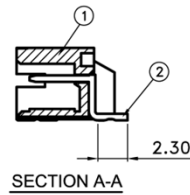
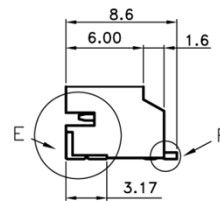
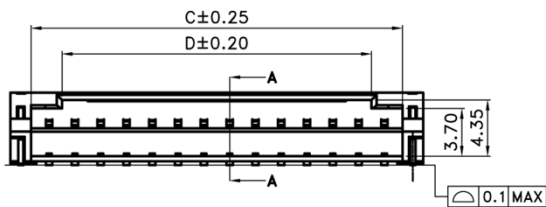
- 1.Base: High Temp Plastic UL 94V-0
 - 2.Contact: Copper Alloy
 - 3.Solder Tab: Copper Alloy
- Plated : Refer the above options
 - Q' ty : 800 pcs./Reel
 - Halogen Free Product Identification LOGO on the Packing



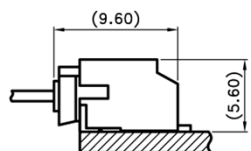
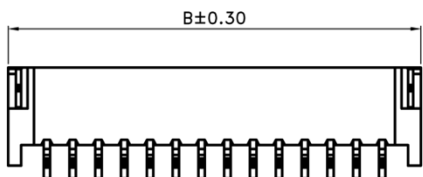
Detail E
SCALE 4:1



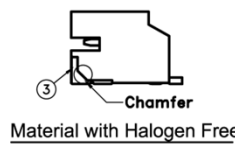
Detail F
SCALE 4:1



SECTION A-A



RECOMMENDED ASSEMBLY DIM.



Material with Halogen Free

Poles	Dimensions(mm)				Poles	Dimensions(mm)			
	A	B	C	D		A	B	C	D
2	2.00	8.00	4.80	1.00	10	18.00	24.00	20.80	16.00
3	4.00	10.00	6.80	2.00	11	20.00	26.00	22.80	18.00
4	6.00	12.00	8.80	4.00	12	22.00	28.00	24.80	20.00
5	8.00	14.00	10.80	6.00	13	24.00	30.00	26.80	22.00
6	10.00	16.00	12.80	8.00	14	26.00	32.00	28.80	24.00
7	12.00	18.00	14.80	10.00	15	28.00	34.00	30.80	26.00
8	14.00	20.00	16.80	12.00	16	30.00	36.00	32.80	28.00
9	16.00	22.00	18.80	14.00					



鈺滿榮企業股份有限公司 ACME LUX CO., LTD.

TEL:886-2-85124595

FAX:886-2-85124322

0.0±0.30	SCALE: 1:1	TITLE: Pitch 2.0mm SMD Type Wafer Connector	PART NO:
0.00±0.20	UNIT: mm	MATERIAL: RoHS	APP BY: <i>Hung</i>
0.000±0.1			CHK BY: <i>Cheryl</i>
DWG. NO. C1212461XXX			DR BY: <i>Amos</i>

