

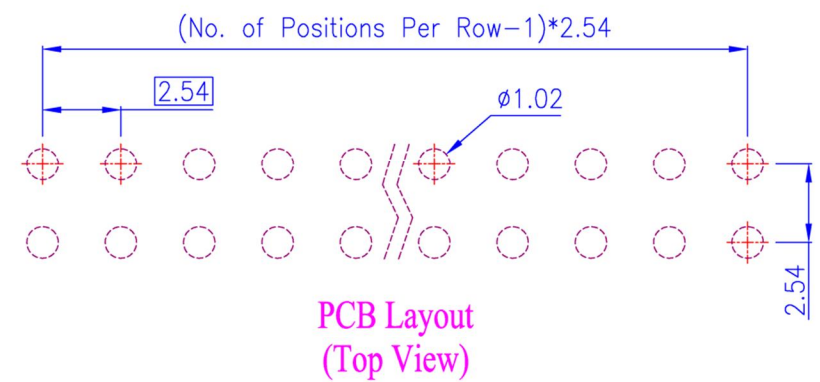
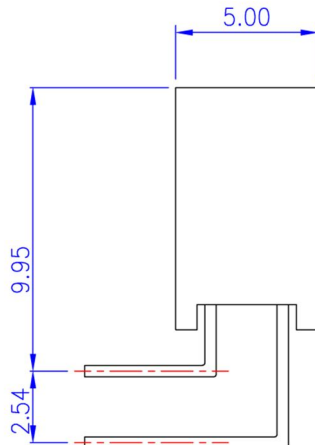
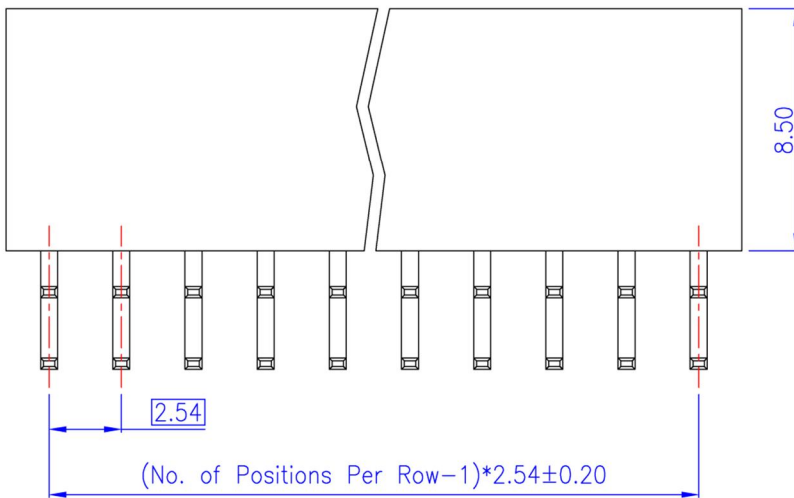
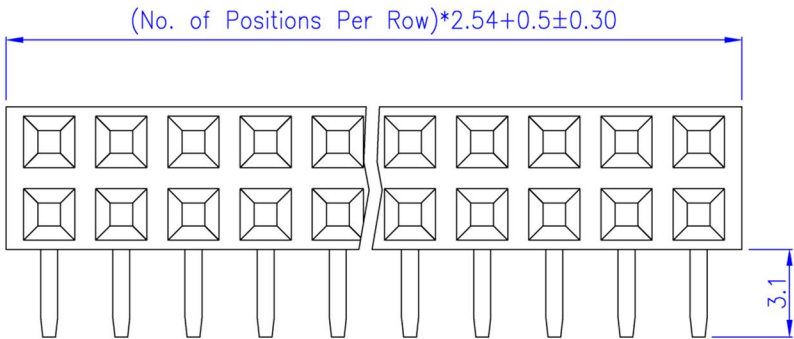
CUSTOMER COPY

REV.	DESCRIPTION	APP.	DATE
A	NEW DESIGN	Amos	2011-04-19

ORDER INFORMATION

189 28 01 XX 3


- 3: Plating Gold Flash
- No. of Contact
- H=8.5mm
- 90° Type

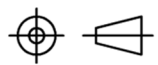


PCB Layout
(Top View)



Material and Finish	Electrical Characteristics	Mechanical Characteristics
1. Housing: Thermoplastic (UL94V-0). 2. Terminal: Copper Alloy (t=0.40mm), Gold Plating.	1. Current Rating: 3.0 Amp. Max.. 2. Dielectric Withstand Voltage: 1000V AC RMS for 60Seconds. 3. Insulation Resistance: 1000M Ohms Min. at 1000V DC. 4. Contact Resistance: 30m Ohms Max.	1. Operating Temperature: -55°C ~ +105°C


鈺滿榮企業股份有限公司 ACMELUX CO., LTD.
 TEL:886-2-85124595 FAX:886-2-85124322

0.0±0.30	SCALE: 1:1	TITLE:	PART NO:
0.00±0.20	UNIT: mm	Pitch 2.54mm Dual Rows Right	APP BY: Hung
0.000±0.1		Angle Type Female Header Conn.	CHK BY: Cheryl
		MATL: RoHS	DR BY: Amos
		DWG. NO. C1892801XX3	A015