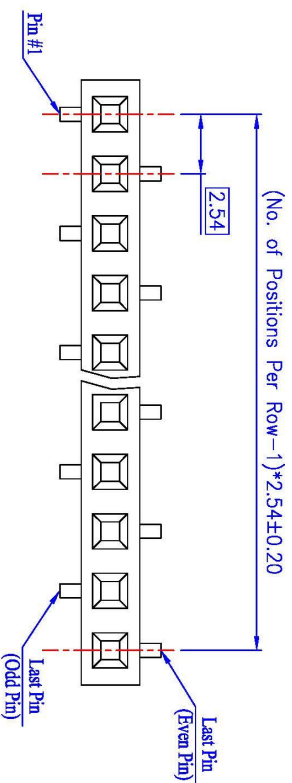
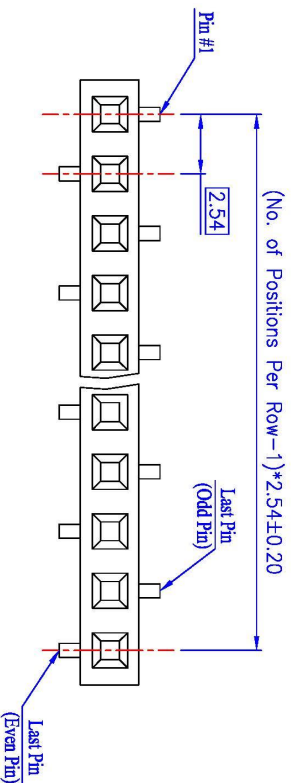


CUSTOMER COPY

Type A



Type B



ORDER INFORMATION

189 20 XX XX X

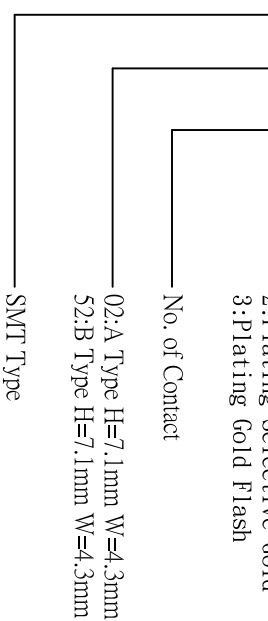
- 1:Plating Tin
- 2:Plating Selective Gold
- 3:Plating Gold Flash

No. of Contact

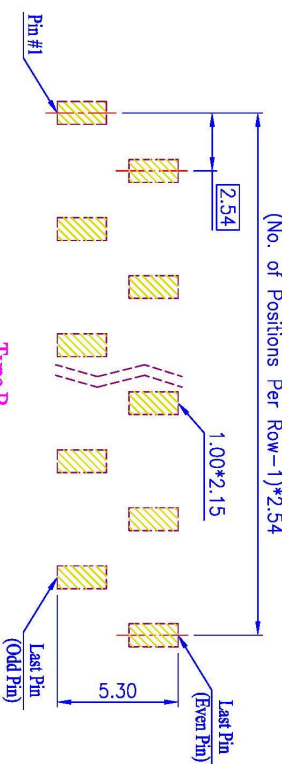
02:A Type H=7.1mm W=4.3mm
52:B Type H=7.1mm W=4.3mm

SMT Type

Type A



Type B



PCB Layout (Top View)



Material and Finish

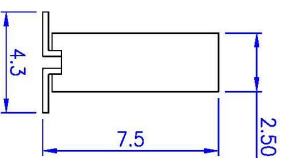
1. Housing: Nylon 6T (UL94V-0), Black.
2. Terminal: Copper Alloy (≒0.25mm), Gold Plating.

Electrical Characteristics

1. Current Rating: 3.0 Amp. Max.
2. Dielectric Withstand Voltage: 1000V AC RMS for 60Seconds.
3. Insulation Resistance: 1000M Ohms Min. at 1000V DC.
4. Contact Resistance: 30m Ohms Max.

Mechanical Characteristics

1. Operating Temperature: -55°C ~ +105°C



钰滿榮企業股份有限公司 ACME LUX CO., LTD.
TEL:886-2-85124595 FAX:886-2-85124322

0.0±0.30	SCALE: 1:1	TITLE:
0.00±0.20	UNIT: mm	Pitch 2.54mm Single Row SMT
0.000±0.1		Type Female Header Connector

	MATL: RoHS	CHK BY: Cheryl
	DWG. NO. C18920XXXXX	DR BY: Amos

PART NO:

APP BY: Hungl

CHK BY: Cheryl

DR BY: Amos A015