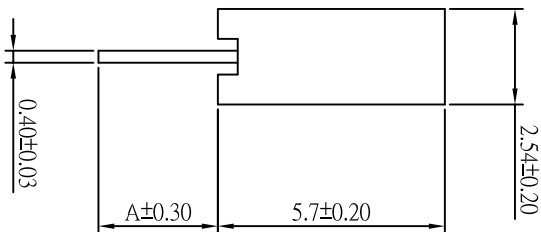
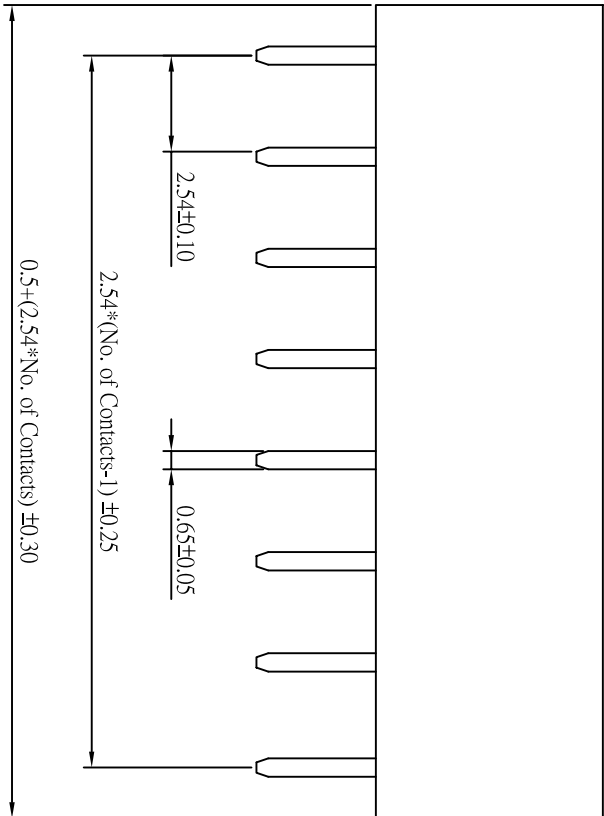
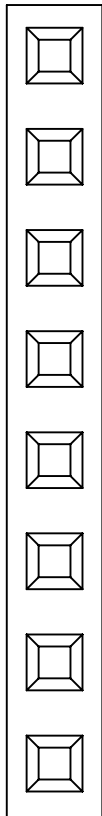


CUSTOMER COPY



ORDER INFORMATION

189 06 4X XX X

Plating:
 2: Selective Gold
 3: All Gold
 No. Of Contact
 (02 ~ 40)

Pin Chart
 40:H=5.7mm
 41:H=5.7mm (RoHS)

Type

REV	ECN NO.	APP.	DATE
A	NEW DESIGN		

SPECIFICATION

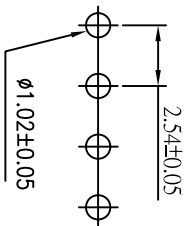
- * Current Rating: 3 A
- * Withstanding Voltage: 500 VAC (1 min.)
- * Insulation Resistance: 1000 Megohms MIN.
- * Contact Resistance: 30 Milliohms MAX.
- * Operating Temperature: -40°C to +85°C
- * Retention Force: 450g MIN.

MATERIAL

- * Contact: Brass
- * Insulator: High temperature plastic
- * Plated: Gold

Pin Chart

No.	A
40	2.8
41	2.8



Recommended P.C. Board Hole Layout



ACMELUX CO., LTD.

TEL:886-2-85124595 FAX:886-2-85124322

0.0±	SCALE:	TITLE:	PART NO:
0.00±	UNIT:	2.54MM (.100") Center Female Header Single Row profile:	117101
0.000±	MM	5.7mm	APP BY:
	MATL:		CHK BY:
	DWG. NO. C189064XXXX		DR BY: JACK LIN