

CUSTOMER COPY

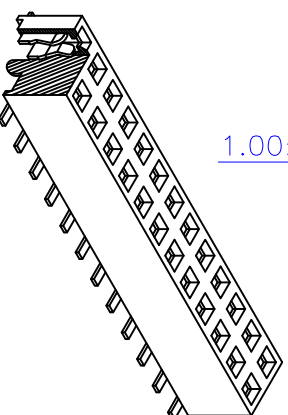
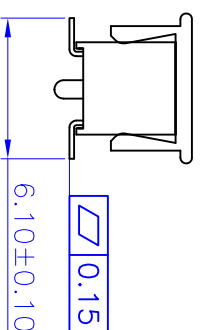
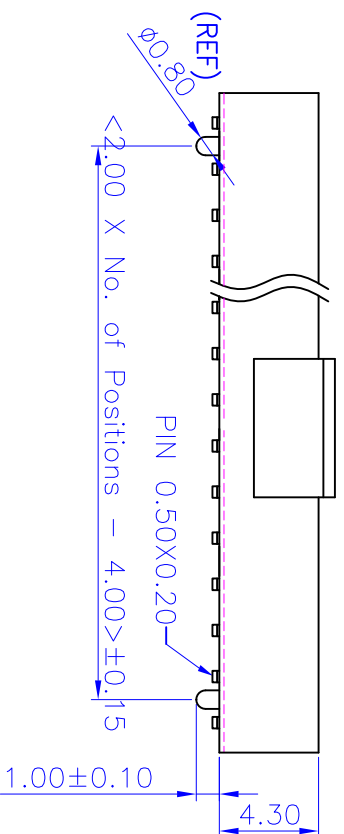
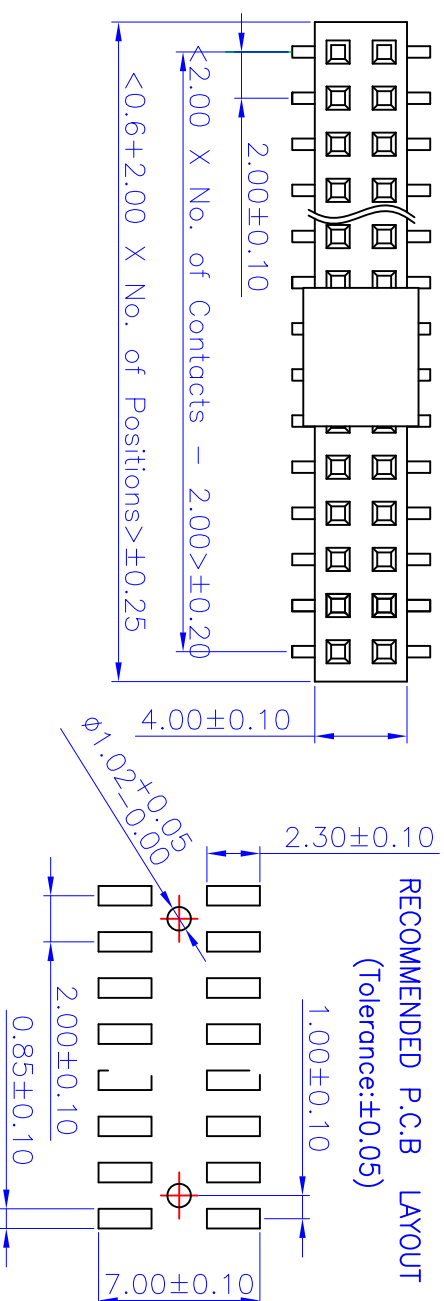
REV.	DESCRIPTION	APP.	DATE
A	NEW DESIGN	Amos	2011-10-12

ORDER INFORMATION

188 67 50 XX X

- 2:Plating Selective Gold
- 3:Plating Gold Flash
- No. of Contact
- H:4.3 W:6.1 Reel Packing
- SMT+Cap Type

RECOMMENDED P.C.B LAYOUT
(Tolerance:±0.05)



Specifications

Current Rating: 2Amp
 Insulation Resistance: 1000MΩ Min.
 Dielectric Withstanding: 500V AC/DC
 Contact Resistance: 20mΩ Max.
 Operating Temperature: -40°C to +105°C

Materials

Contact Material: Phosphor Bronze
 Insulation Material: Polyester, UL 94V-0 Nylon 6T
 All materials must be GP materials



钰满荣企业股份有限公司 ACMELUX CO., LTD.

TEL:886-2-85124595 FAX:886-2-85124322

0.0±0.30	SCALE: 1:1	TITLE: Pitch 2.0mm Dual Rows	PART NO:
0.00±0.20	UNIT: mm	SMT+Cap Type	APP BY: Hung
0.000±0.1		Female Header Connector	CHK BY: Cheryl
		MAT: RoHS	DR BY: Amos
		DWG. NO. C1886750XXXX	



C050