

CUSTOMER COPY

ORDER INFORMATION  
188 60 XX XX X

REV.	DESCRIPTION	APP.	DATE
A	NEW DESIGN	Amos	2011-05-17

2:Plating Selective Gold  
3:Plating Gold Flash  
No. of Contact (04 ~ 80)  
Pin Chart (RoHS)  
Type

SPECIFICATION

\* Current Rating:  
1 A

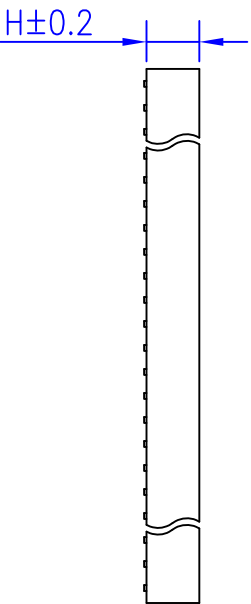
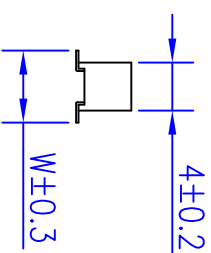
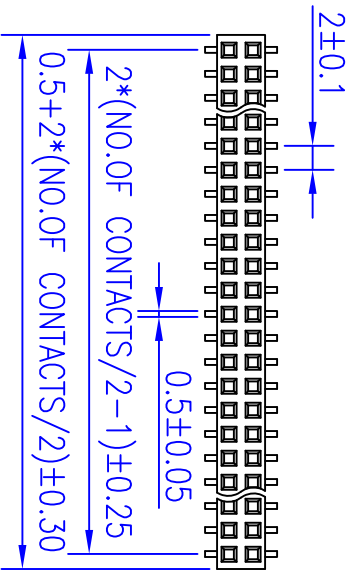
\* Withstanding Voltage:  
500 VAC (1 min.)

\* Insulation Resistance:  
1000 Megohms MIN.

\* Contact Resistance:  
30 Milliohms MAX.

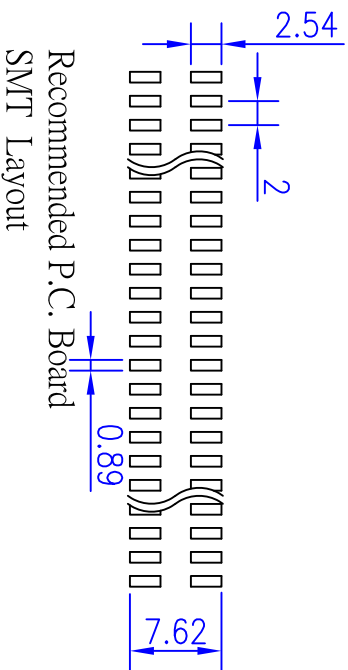
\* Operating Temperature:  
-55°C to +105°C

\* Retention Force:  
450g MIN.



Pin Chart

No.	H	W
50	4.30	5.80
51	4.30	4.60
52	2.20	5.20
53	4.30	6.00
54	4.30	6.00
55	2.20	6.50
56	4.40	6.00
57	4.30	4.60



Recommended P.C. Board  
SMT Layout

MATERIAL

- \* Contact: Phosphor Bronze
- \* Insulator: High Temperature Plastic
- \* Plating: Contact Gold

钰满荣企业股份有限公司 ACMEIUX CO., LTD.

TEL:886-2-85124595

FAX:886-2-85124322

0.0±0.30	SCALE: 1:1	TITLE:	PART NO:
0.00±0.20	UNIT: mm	Pitch 2.0*2.0mm SMD Dual Row	APP BY: Hung
0.000±0.1		Type Female Header Connector	CHK BY: Cheryl
		MATL: RoHS	DR BY: Amos
		DWG. NO. C18860XXXXXX	