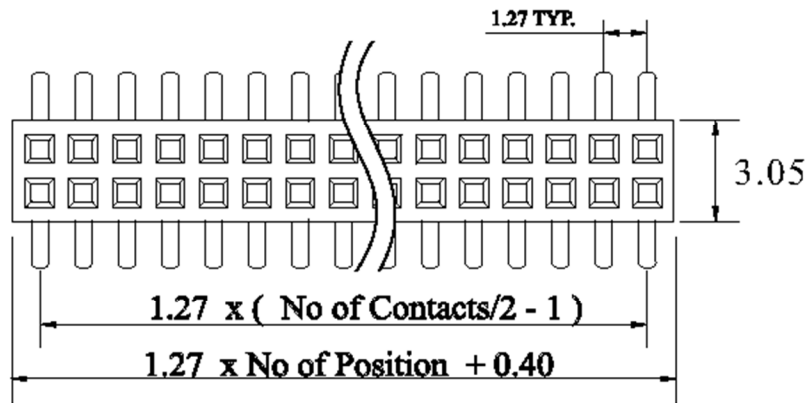


**CUSTOMER COPY**

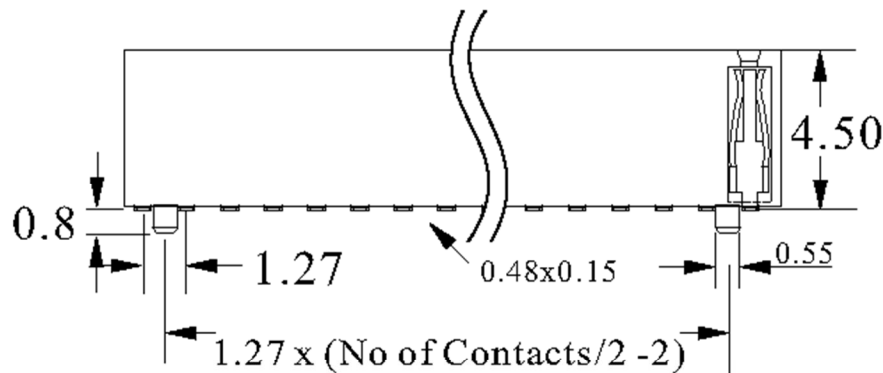
REV.	DESCRIPTION	APP.	DATE
A	NEW DESIGN	Amos	2011-03-03



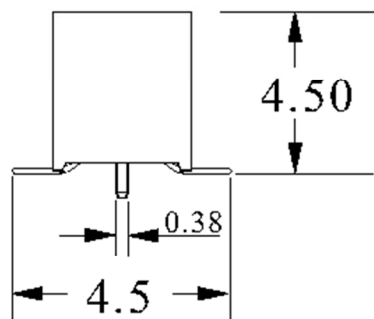
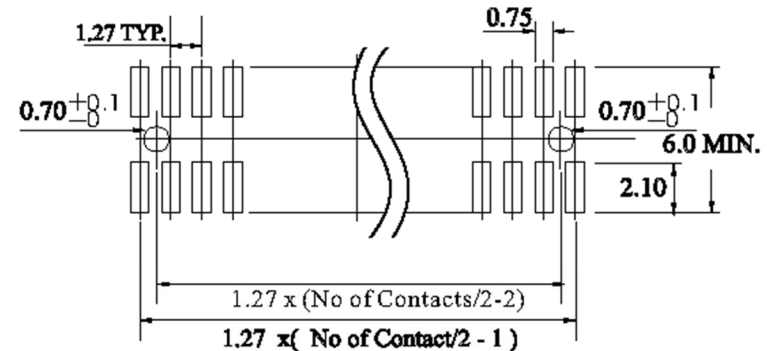
**ORDER INFORMATION**

186 54 33 XX X

- 2:Plating Selective Gold
- 3:Plating Gold Flash
- No. of Contact (04 ~ 100)
- 00:100 Pin
- H=4.35 W=4.5
- Type



**Recommended P.C.Board Hole Layout :**



**SPECIFICATIONS**

Current rating : 1 Amps  
 Dielectric Withstanding : AC 500V  
 Contact resistance : 20 Milliohms Max.  
 Insulation resistance : 5000 Megohms Min.  
 Temperature range : - 40°C ~ + 105°C  
**MATERIAL :**  
 Housing : High Temperature Thermoplastic  
 Terminal : Phosphor Bronze



**鈺滿榮企業股份有限公司 ACMELUX CO., LTD.**

TEL: 886-2-85124595

FAX: 886-2-85124322

0.0±0.30	SCALE: 1:1	TITLE:	PART NO:
0.00±0.20	UNIT: mm	Pitch 1.27mm*1.27mm	APP BY: Hung
0.000±0.15		SMD Dual Row Female Header	CHK BY: Cheryl
		MATL: RoHS	DR BY: Amos
		DWG. NO. C1865433XXX	A225