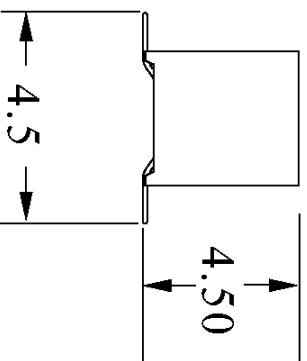
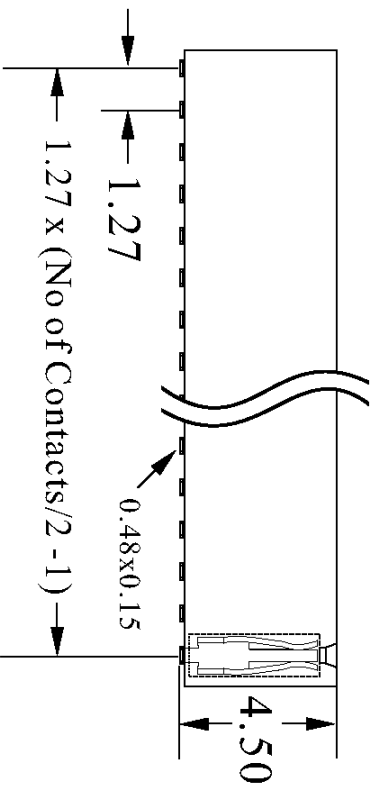
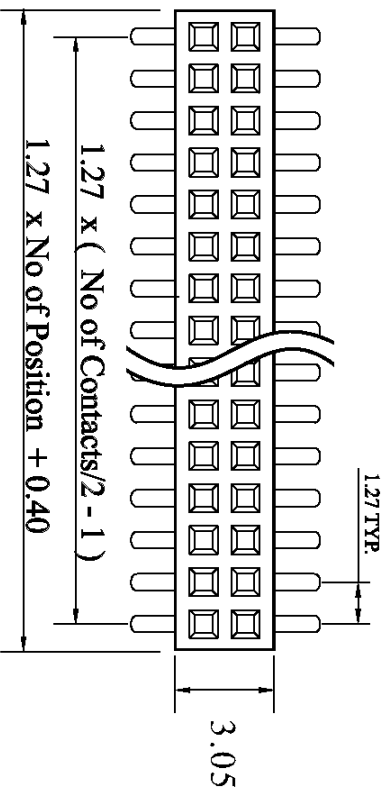
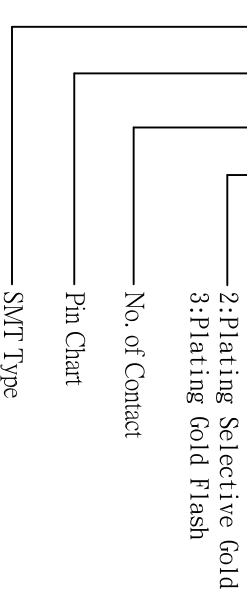


CUSTOMER COPY

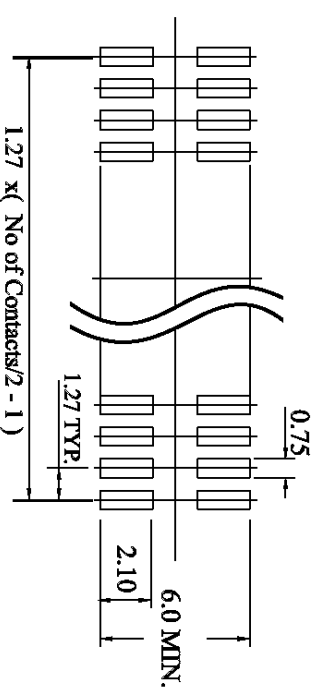


ORDER INFORMATION

186 48 58 XX X




Recommended P.C. Board Hole Layout :



SPECIFICATIONS

- Current rating : 1 Amps
 - Dielectric Withstanding : AC 500V
 - Contact resistance : 20 Milliohms Max.
 - Insulation resistance : 5000 Megohms Min.
 - Temperature range : - 40 °C ~ + 105 °C
- MATERIAL :**
 Housing : High Temperature Thermoplastic
 Terminal : Phosphor Bronze

REV.	DESCRIPTION	APP.	DATE
A	NEW DESIGN	Amos	2014-05-06


 钰滿榮企業股份有限公司 ACMELUX CO., LTD.
 TEL.:886-2-85124595 FAX:886-2-85124322

0.0±0.30	SCALE: 1:1	TITLE:	PART NO:
0.00±0.20	UNIT: mm	Pitch 1.27mm SMT Type	APP BY: Hungl
0.000±0.15		Female Header Connector	CHK BY: Cheryl
		MATL: RoHS	DR BY: Amos
		DWG. NO. C1864858XXX	



A243