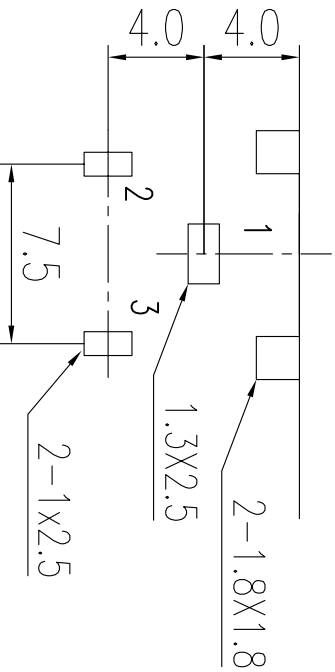
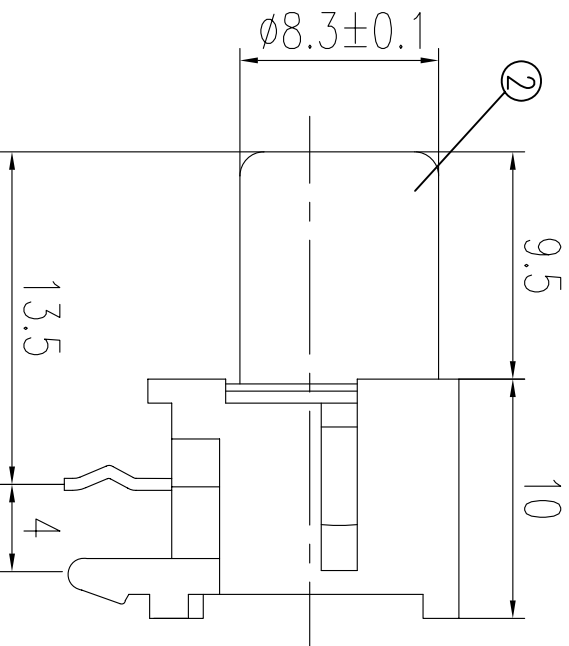
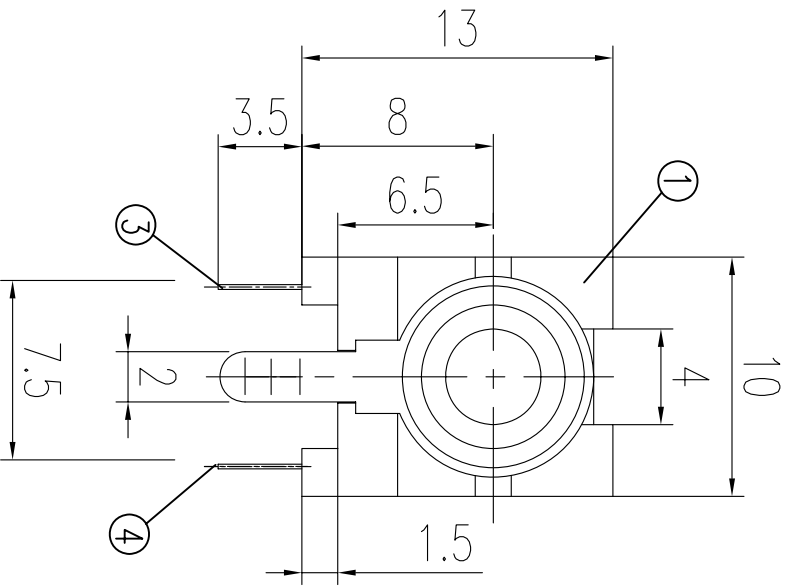


CUSTOMER COPY



T:1.6 Dimensions of PC board holes
Tolerance : ±0.1(Printed-side view)

UNLESS OTHERWISE SPECIFIED, TOLERANCE ON DECIMAL: ±0.3

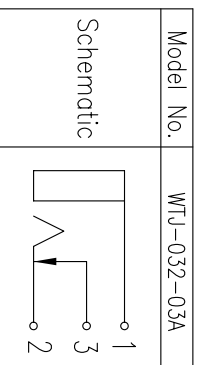
ORDER INFORMATION
1806 02 XX 1 X

Style : 90° (RoHS)

- 12:White
- 13:Yellow
- 14:Red
- 15:Black
- 16:Blue
- 18:Green

Part

4:Plated Silver



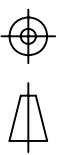
4	SHUNT SPRING	1	C2680	t=0.3	MB:Cu	Ag PLATED
3	TIP SPRING	1	C5210	t=0.3	MB:Cu	Ag PLATED
2	OUTER CONTACT	1	C2680	t=0.4	MB:Cu	Ni PLATED
1	HOUSING	1	PBT		UL-94VO	
LTR	PART NAME	QTY	MATERIAL			REMARK



ACMELUX CO., LTD.

TEL:886-85124595 FAX:886-85124322

0.0±	0.30	SCALE:	1:1	TITLE:	Pin Jack	PART NO.:	
0.00±	0.20	UNIT:	mm			APP BY:	<i>Stung</i>
0.000±	0.10					CHK BY:	<i>Cheryl</i>



MATL:	RoHS	DR BY:	<i>Amos</i>
DWG. NO.	C180602XX1X		A243

REV. ECN. NO.	APP. DATE
A NEW DESIGN	