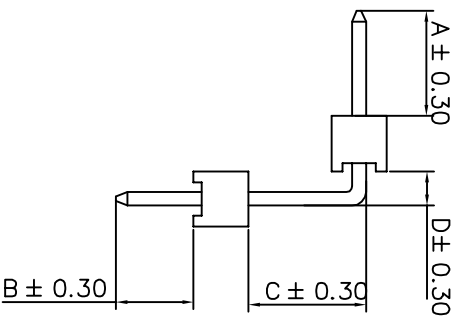
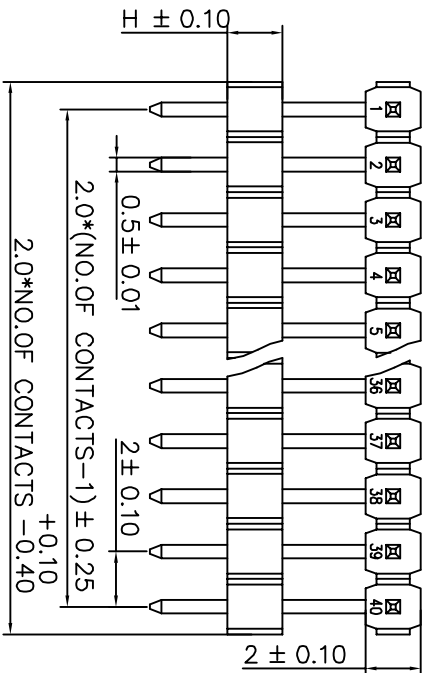
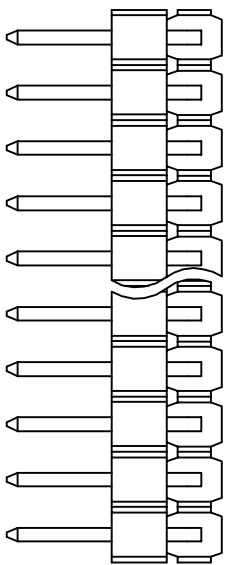
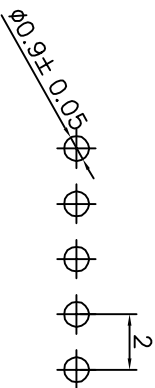


CUSTOMER COPY



Pin Chart

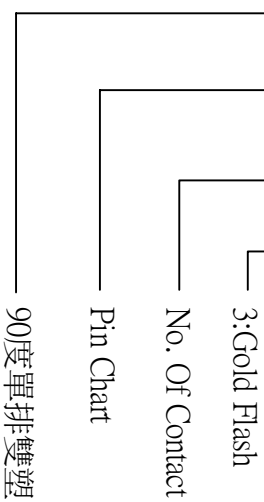
No.	A	B	C	D	H
00	2.00	2.00	1.25	5.00	2.00
01	2.00	2.00	2.00	2.50	2.00
02					
03					
04					
05					
06					



Recommended P.C.Board
Hold Layout

*Oder Information

173 42 XX XX X



SPECIFICATION

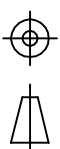
Current Rating: 1 A
 Withstanding Voltage: 500V AC
 Insulation Resistance: 1000 Megohms Min.
 Contact Resistance: 20 Milliohms Max.
 Operating Temperature: -55°C to +105°C

REV	ECN NO.	APP.	DATE
A	NEW DESIGN	ADER	20141027



ACMELUX CO., LTD.
 TEL: 886-85124595 FAX: 886-85124322

0.0±0.30	SCALE:	TITLE:	PART NO:
0.00±0.20	UNIT: mm	2.0mm Pin Header	APP BY: HUNG
0.000±0.10		Single Row Dual Base	CHK BY: CHERYL
		Up Angle Dip Type	DR BY: ADER



MATL:	NYLON
DWG. NO.	17342XXXXX