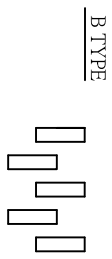
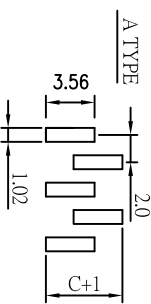
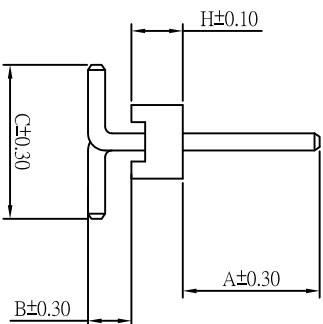
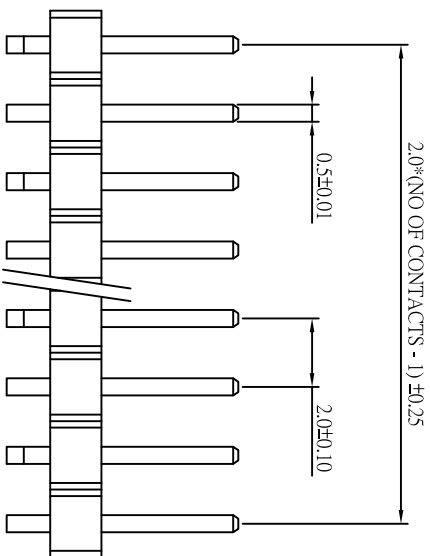
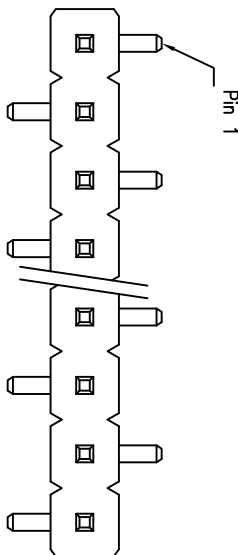
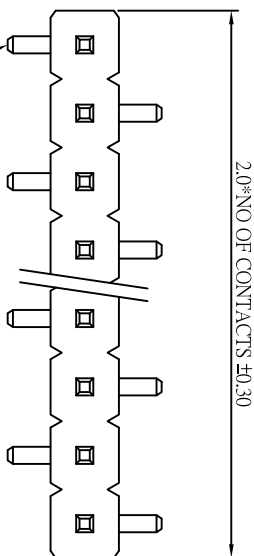
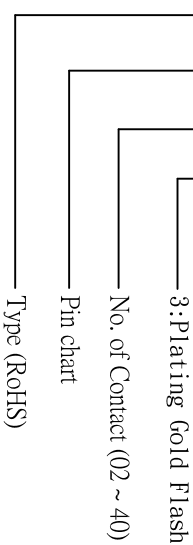


CUSTOMER COPY

| REV. | DESCRIPTION | APP. | DATE       |
|------|-------------|------|------------|
| A    | NEW DESIGN  | Amos | 2009-04-23 |
| B    | Modify Size | Amos | 2009-05-04 |

ORDER INFORMATION

173 12 XX XX X



Pin Chart A Type

| No. | A    | B    | C    | H    |
|-----|------|------|------|------|
| 00  | 4.00 | 1.03 | 5.50 | 2.00 |
| 01  | 4.00 | 1.20 | 4.30 | 2.00 |
| 02  | 16.5 | 0.65 | 5.2  | 2.00 |
| 03  | 4.00 | 0.50 | 4.50 | 2.00 |

Pin Chart B Type

| No. | A    | B    | C    | H    |
|-----|------|------|------|------|
| 30  | 3.90 | 0.50 | 4.50 | 2.00 |
| 31  |      |      |      |      |

SPECIFICATION

- \* Current Rating: 1 A
- \* Withstanding Voltage: 600 VAC ( 1 min. )
- \* Insulation Resistance: 1000 Megohms MIN.
- \* Contact Resistance: 30 Milliohms MAX.
- \* Operating Temperature: -55°C to +105°C
- \* Retention Force: 600g MIN.
- \* Contact: Brass
- \* Insulator: High temperature plastic
- \* Plating: Selective Gold or All Gold

MATERIAL



钰满荣企业股份有限公司 ACME LUX CO., LTD.

TEL: 886-2-85124595

FAX: 886-2-85124322

|             |            |                                 |              |
|-------------|------------|---------------------------------|--------------|
| 0.0 ± 0.30  | SCALE: 1:1 | TITLE:                          | PART NO:     |
| 0.00 ± 0.20 | UNIT: mm   | Pitch 2.0mm Single Row SMD Type | 109300       |
| 0.000 ± 0.1 |            | Center Pin Header Connector     | APP BY: Hung |

|  |                       |                |
|--|-----------------------|----------------|
|  | MATL: RoHS (Nylon 6T) | CHK BY: Cheryl |
|  | DWG. NO. C17312XXXXXX | DR BY: Amos    |

Recommended P.C. Board SMD Layout