

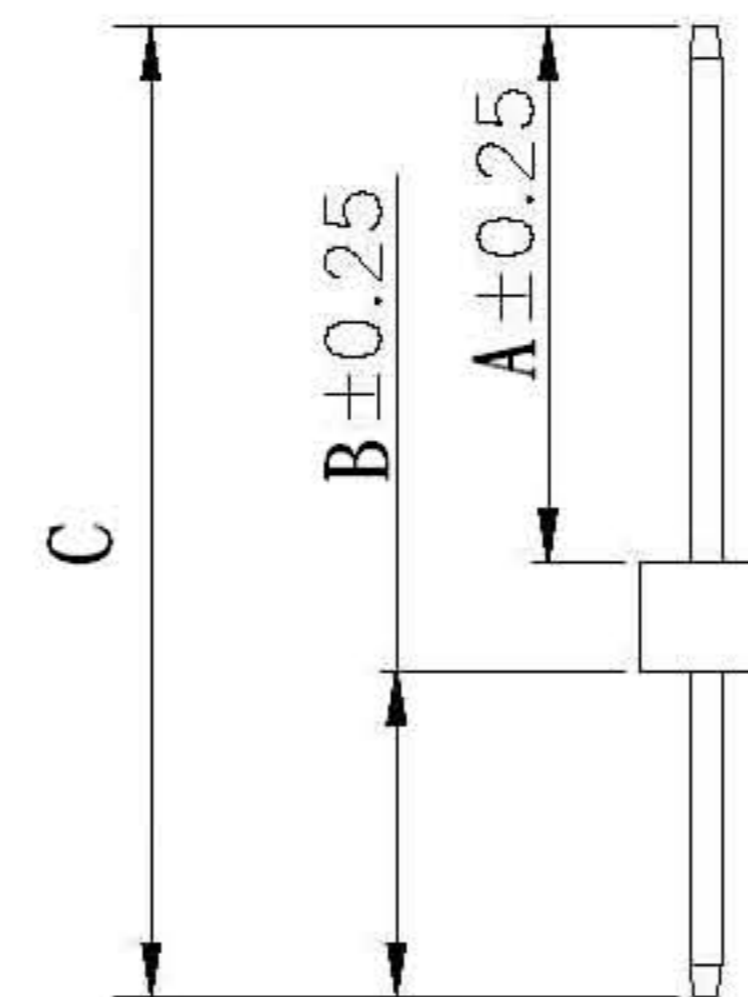
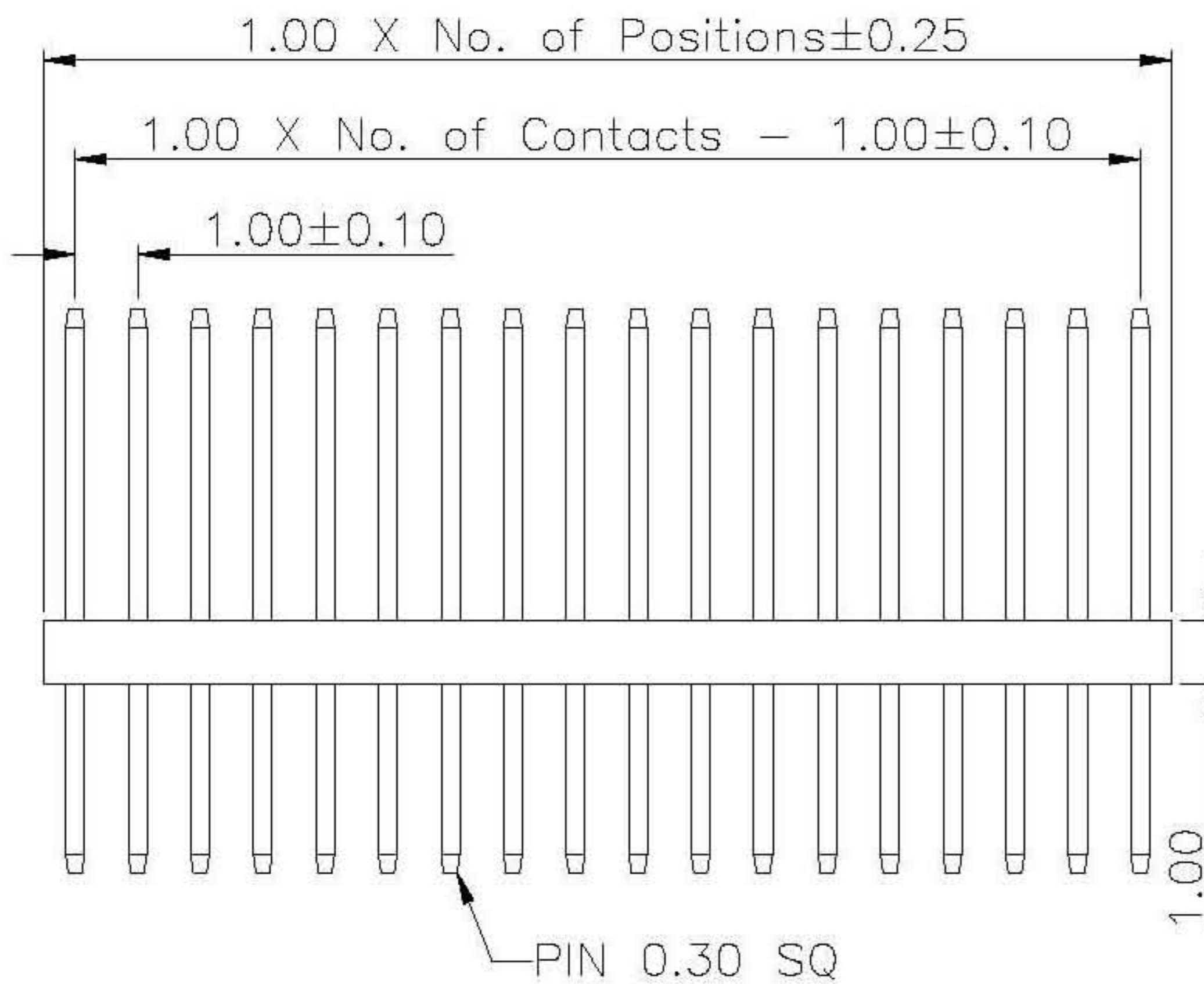
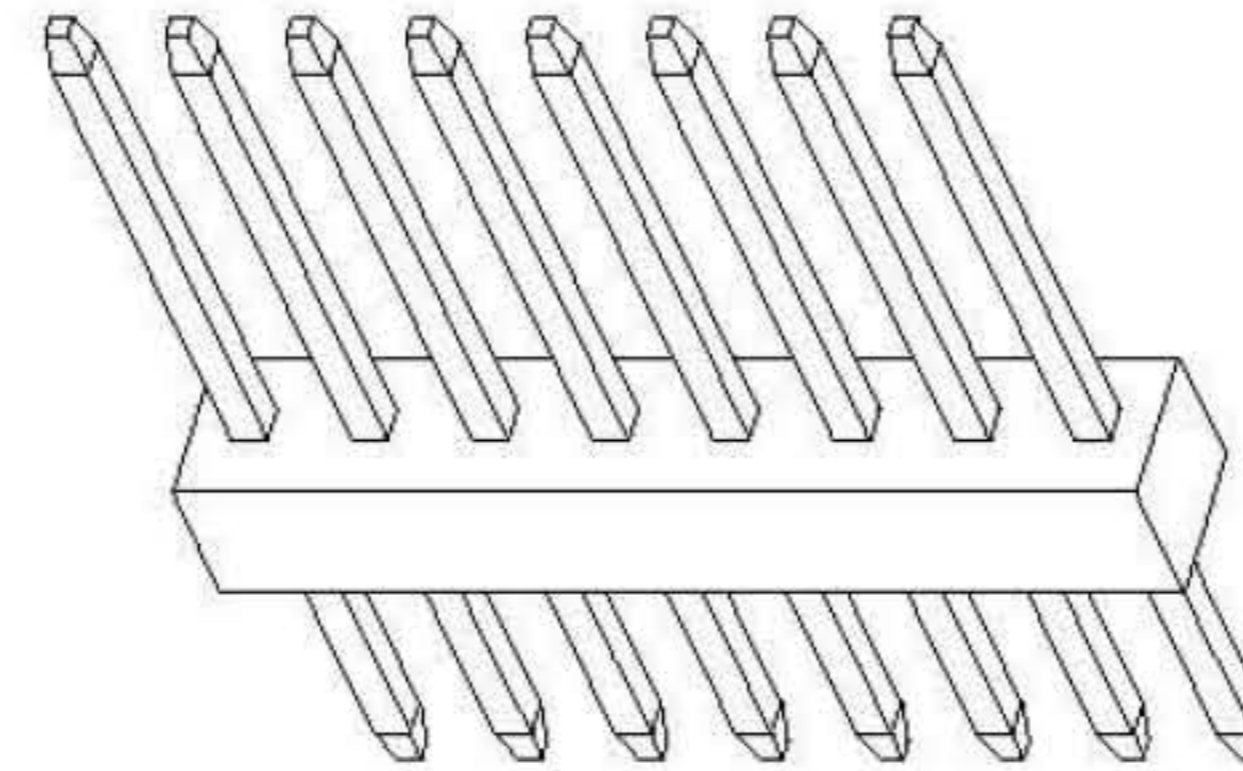
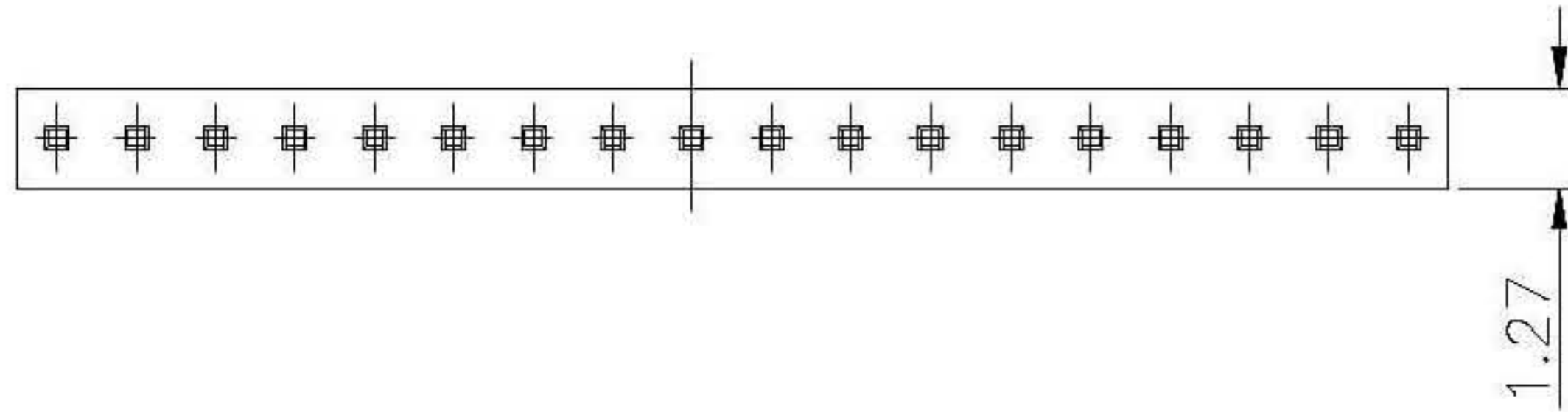
CUSTOMER COPY

REV.	DESCRIPTION	APP.	DATE
A	NEW DESIGN	Amos	2009-08-11

ORDER INFORMATION

170 08 XX XX X

- 3:Plating Gold Flash
- NO. of Contact
- Pin Chart
- 180° Single Row DIP Type



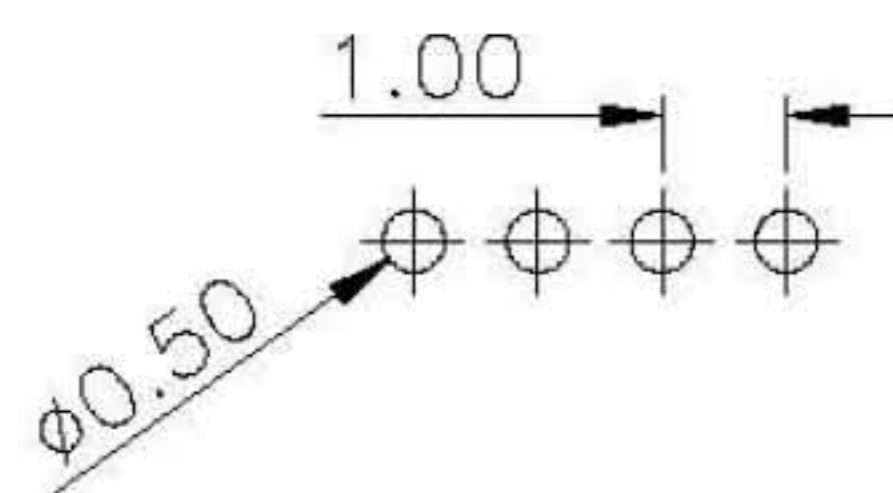
Specifications

- Current Rating: 1Amp
- Insulation Resistance: 500MΩ Min.
- Dielectric Withstanding: 600VAC
- Contact Resistance: 20mΩ Max.
- Operating Temperature: -40°C to +105°C

Materials

- Contact Material: Brass
- Insulator Material: Polyester, UL 94V-0 NYLON-6T
- All materials must be GP materials

Recommended P.C.Board Hole Layout



Pin Chart

No.	A	B	C
02	5.0	3.0	9.0



鈺滿榮企業股份有限公司 **ACMELUX CO., LTD.**

TEL: 886-2-85124595 FAX: 886-2-85124322

0.0±0.30	SCALE: 1:1 UNIT: mm	TITLE: Pitch 1.0mm 180° Single Row DIP Type Pin Header Connector	PART NO:
0.00±0.20			APP BY: <i>Hung</i>
0.000±0.1			CHK BY: <i>Cheryl</i>
		MATL: RoHS	DR BY: <i>Amos</i>
DWG. NO. C17008XXXXX			C050