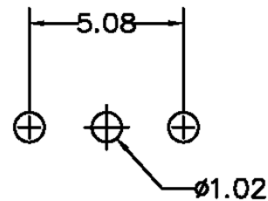
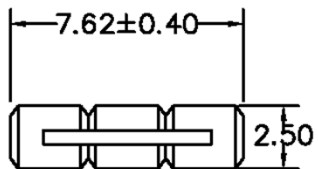


CUSTOMER COPY

REV.	DESCRIPTION	APP.	DATE
A	NEW DESIGN	Amos	2013-06-26



RECOMMENDED P.C.B LAYOUT

ORDER INFORMATION

114 99 XX XX X

- 1:Plating Tin
- 3:Plating Gold Flash
- No. of Contact
- Pin Chart
- Type

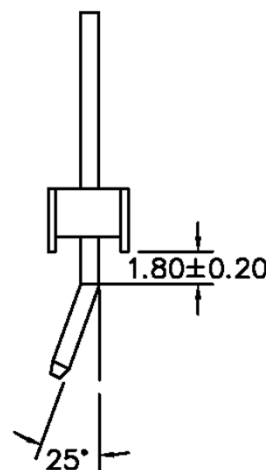
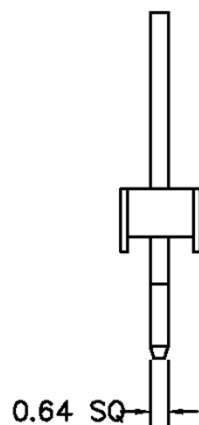
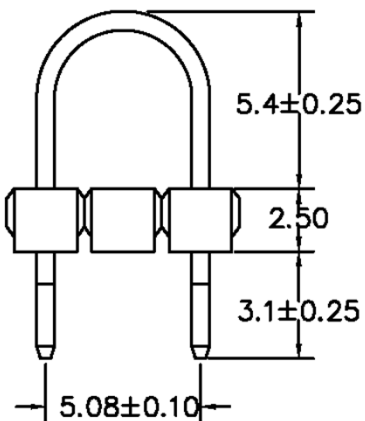
MATERIAL

HOUSING : THERMOPLASTIC UL94V-0
CONTACT : COPPER ALLOYS

SPECIFICATION

CURRENT: 3A
OPERATING TEMPERATURE: -55°C TO +105°C
CONTACT RESISTANCE : 20 MILLIOHMS MAX
INSULATION RESISTANCE : 1000 MEGAOHMS MIN
WITHSTANDING VOLTAGE : AC 1000V RMS

RoHS



 鈺滿榮企業股份有限公司 ACMELUX CO., LTD. TEL:886-2-85124595 FAX:886-2-85124322			
0.0±0.38	SCALE: 1:1	TITLE:	PART NO:
0.00±0.25	UNIT: mm	Pitch 2.54mm U Type	APP BY: <i>Hung</i>
0.000±0.15		Pin Header Connector	CHK BY: <i>Cheryl</i>
 		MATL: RoHS	DR BY: <i>Amos</i>
		DWG. NO. C11499XXXXXX	APP84